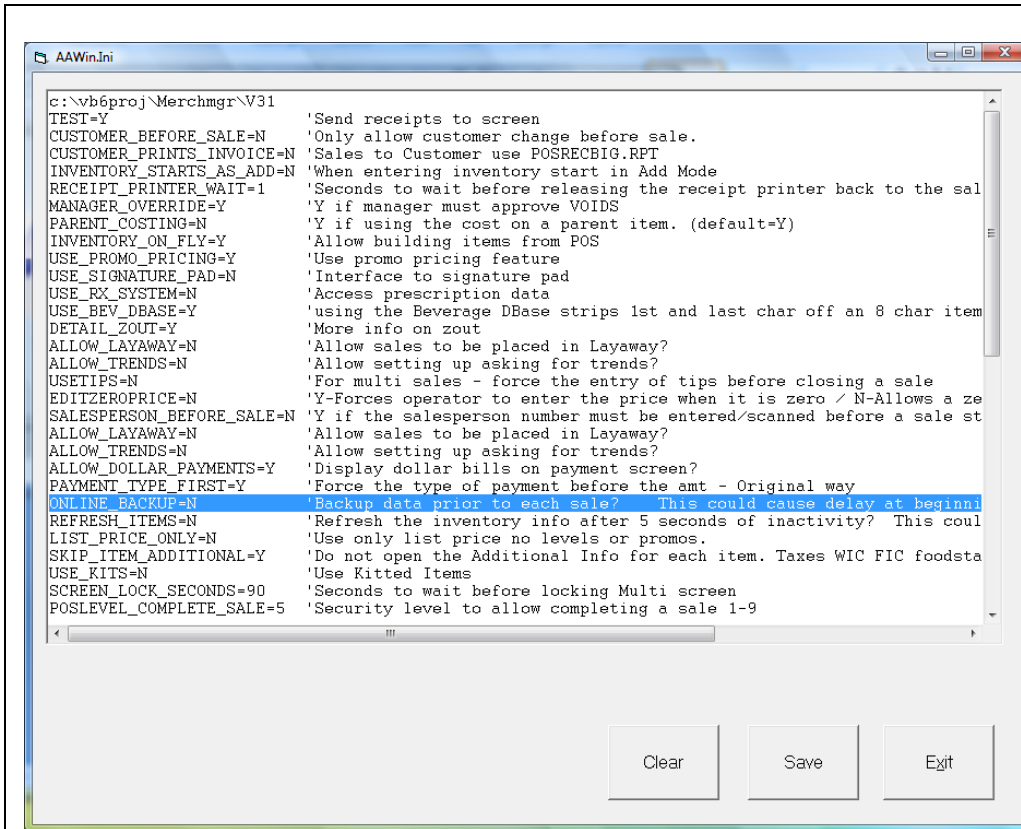
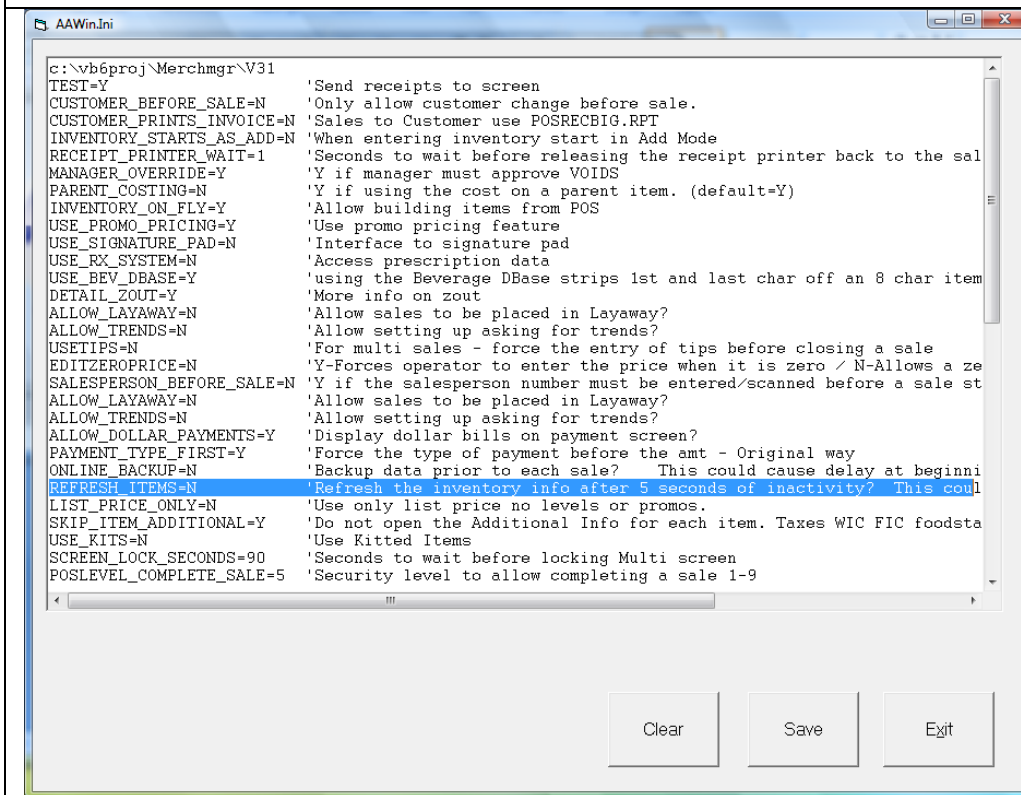


Eliminate some speed issues during sale entry



Some features that may slow down or appear to hang the system during sale entry are:

Online Backup: When this feature is turned on, after a time of no activity, the system will start making a copy of the current database. If the user starts a sale while this is running, it will drag (the bigger the file the longer it takes). Set ONLINE_BACKUP=N in the AAWin file to stop this.



Refresh Items: When this is turned on, after a time of no activity, the system will close and reopen the inventory file. This is to get any price updates that have been pushed from the back office. If the user starts a sale while this is running, it will drag. Set REFRESH_ITEMS=N in the AAWin file to stop this.

Exiting the software and going back in does the same thing.

```

AAWin.Ini
c:\vb6proj\Merchmgr\V31
TEST=Y 'Send receipts to screen
CUSTOMER_BEFORE_SALE=N 'Only allow customer change before sale.
CUSTOMER_PRINTS_INVOICE=N 'Sales to Customer use POSRECBIG.RPT
INVENTORY_STARTS_AS_ADD=N 'When entering inventory start in Add Mode
RECEIPT_PRINTER_WAIT=1 'Seconds to wait before releasing the receipt printer back to the sal
MANAGER_OVERRIDE=Y 'Y if manager must approve VOIDS
PARENT_COSTING=N 'Y if using the cost on a parent item. (default=Y)
INVENTORY_ON_FLY=Y 'Allow building items from POS
USE_PROMO_PRICING=Y 'Use promo pricing feature
USE_SIGNATURE_PAD=N 'Interface to signature pad
USE_RX_SYSTEM=N 'Access prescription data
USE_BEV_DBASE=Y 'using the Beverage DBase strips 1st and last char off an 8 char item
DETAIL_ZOUT=Y 'More info on zout
ALLOW_LAYAWAY=N 'Allow sales to be placed in Layaway?
ALLOW_TRENDS=N 'Allow setting up asking for trends?
USETIPS=N 'For multi sales - force the entry of tips before closing a sale
EDITZEROPRICE=N 'Y-Forces operator to enter the price when it is zero / N-Allows a ze
SALESPERSON_BEFORE_SALE=N 'Y if the salesperson number must be entered/scanned before a sale st
ALLOW_LAYAWAY=N 'Allow sales to be placed in Layaway?
ALLOW_TRENDS=N 'Allow setting up asking for trends?
ALLOW_DOLLAR_PAYMENTS=Y 'Display dollar bills on payment screen?
PAYMENT_TYPE_FIRST=Y 'Force the type of payment before the amt - Original way
ONLINE_BACKUP=N 'Backup data prior to each sale? This could cause delay at beginni
REFRESH_ITEMS=N 'Refresh the inventory info after 5 seconds of inactivity? This coul
LIST_PRICE_ONLY=N 'Use only list price no levels or promos.
SKIP_ITEM_ADDITIONAL=Y 'Do not open the Additional Info for each item. Taxes WIC FIC foodsta
USE_KITS=N 'Use Kitted Items
SCREEN_LOCK_SECONDS=90 'Seconds to wait before locking Multi screen
POSLEVEL_COMPLETE_SALE=5 'Security level to allow completing a sale 1-9

```

Clear Save Exit

Reading Additional Items:
 When this is turned on everytime an item is scanned or entered, an additional file is opened to see if multiple taxes, WIC, FoodStamp, FSA is associated with it. If you do not distinguish these items, it is not necessary to open the file each time. Set SKIP_ITEM_ADDITIONAL=Y in the AAWin file to stop this.

Files Changed

- AAGlobal.BAS
- AAFunctions.BAS
- AAPOS.BAS
- frmCCSwipe.frm
- frmCCSetup.frm
- frmMultiSale.frm
- frmPOSEntry40.frm
- frmMultiEntry40.frm
- frmAAWin.frm
- frmMultiEntrySQL.frm
- frmPLU.frm