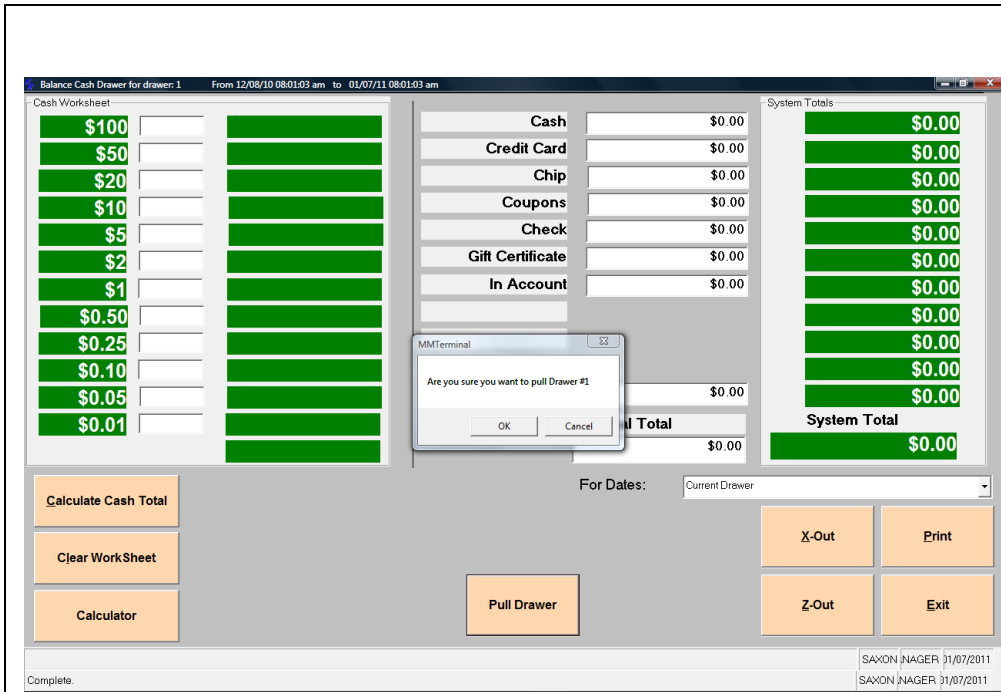
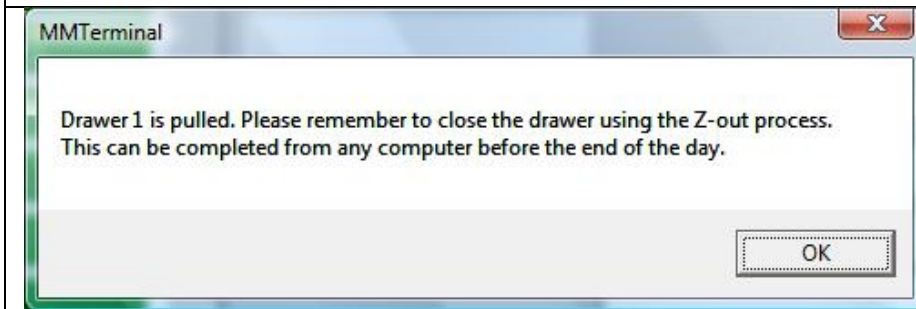


Restaurant (Multi-Sales) Changes



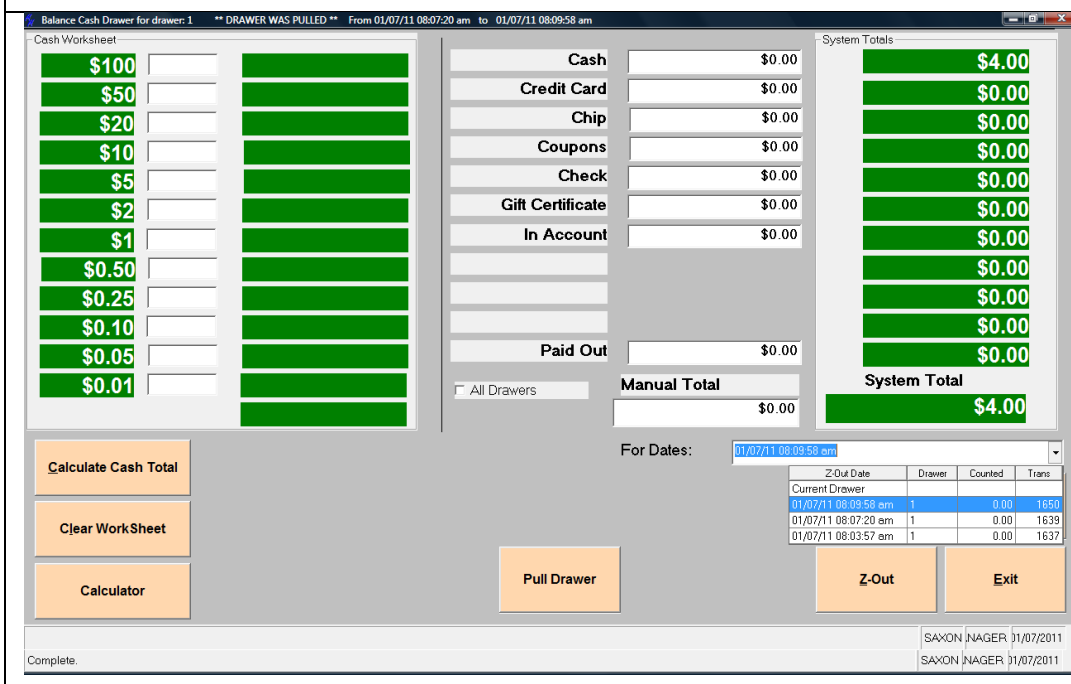
To allow pulling a cash drawer without having to count the drawer right away.

From the balance drawer screen, a new button has been added **Pull Drawer**. Answer Yes to Are you sure you want to pull drawer #.



The drawer is not closed yet but can be removed and another drawer started at the same station.

The drawer can then be counted away from traffic flow.



To finally close the drawer in the same day it was pulled, select the Balance from ANY computer on the system.

Select the correct pull from the drop down window on the bottom right side of the screen.

From there enter the information that was actually counted.

Then select Z-Out to finally close that drawer.

Files Changed

AAGlobal.BAS

AAFunctions.BAS

frmMultiSale.frm