

# Merchandise Manager

## POS and Inventory Software

Spartan Software, Inc.



Now Includes

Tobacco discounts interfaced with Scan Data

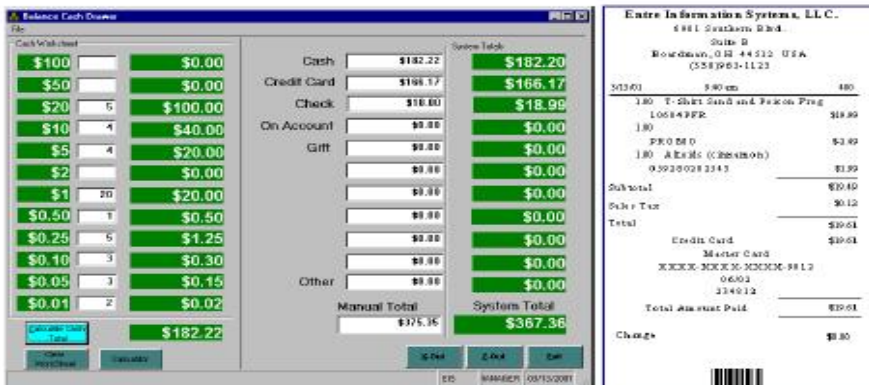
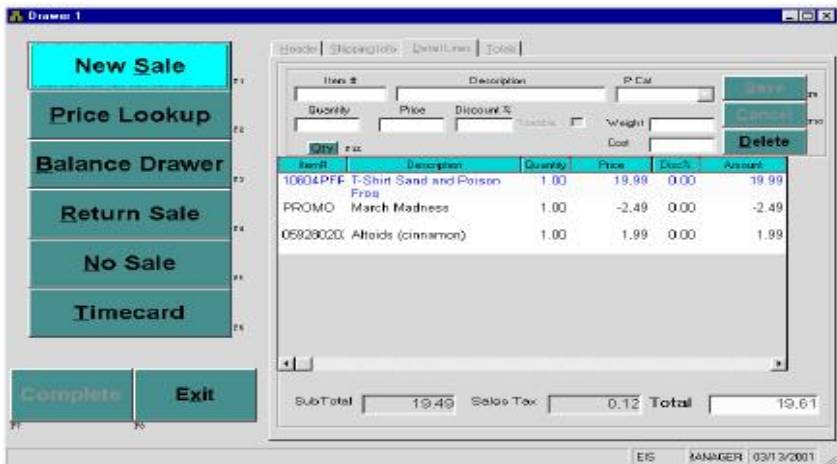
Additional loyalty discounts interfaced with Scan Data

Customer loyalty rewards program to increase foot traffic

Seamless credit card interface to accept swipe / chip / Apple Pay / Android Pay

The POS software is designed to allow each cashier to sign in to one screen and be able to handle all of their daily responsibilities from that screen. Enter sales and returns, lookup prices, balance their drawer, enter a no sale and even use the screen to clock in and out of their timecard.

### POS Features



- Speedy checkout
- Scanning of UPC's PLU's or SKU's and Barcodes
- Splitting tenders (unlimited tenders, even multiple credit cards)
- Price lookups (scan the product # or enter any type of search criteria)
- Promotional Sales (Date ranges, quantity limits, quantity discounts, customer contract pricing)
- Line discounts or whole sale discounts
- Customer account tracking
- Barcoded receipts to expedite and verify a return
- X-Out and Z-Out (Blind Z-Out optional)
- Misc. Payouts and Receive on account
- Timecard clocking in and out by any employee at any computer
- Ship to addresses
- Multiple pricing levels
- Trend tracking (Customer zip codes, phone #'s etc.)
- Salesperson tracking for commissions
- Detailed history tracking of every line of every sale
- \*\* NEW \*\***
- Completely internal gift card tracking. No outside fees charged.

Spartan Software Inc.

# New Scan Data / Loyalty Interfaces (included)

## Mix and Match tobacco discounts

Merchandise Manager interfaces with Scan Data processors for cigarette / tobacco rebates. The processor pulls sales daily and validates them for store rebates.

This allows your store to offer discounts on tobacco that your competitors may not offer. The discounts are based on mix and matches so a combination of like products will qualify.

Drawer - 1 Salesperson: Customer: Cash Sale Balance: -\$224,898.56

Header | Shipping Info | Detail Lines | Totals

Item # Description UPC Save Delete  
Quantity Price Disc % Void Cancel Disc.

Item#	Description	Quantity	Price	Disc%	Amount	U/M
289652	MARLBORO 72'S GOLD BOX	1	6.09	0.00	6.09	
289622	MARLBORO 72'S MENTHOL BOX	1	6.14	0.00	6.14	
PROMO	Mix: 2 Qty: 2 Disc \$--0.50	1	-0.50	0.00	0.00	

Up

BEER WINE  
ICE CANDY MISC TAXAB  
Miscellaneous Non Tax Coffee black mild sin  
black\_mild FT 100 singl Gas Gas Refunc

## Loyalty Card tobacco discounts

Merchandise Manager also offers a loyalty rewards program that interfaces with Scan Data processors.

Customers are provided a loyalty card that will give them additional discounts on tobacco products. Just scan the loyalty card or lookup the customer by phone number.

Drawer - 1 Salesperson: House Sales, Customer: amanda Balance: -\$2.00

Header | Shipping Info | Detail Lines | Totals

Item # Description UPC Save Delete  
Quantity Price Disc % Void Cancel Disc.

Item#	Description	Quantity	Price	Disc%	Amount	U/M
289652	MARLBORO 72'S GOLD BOX	1	6.09	0.00	6.09	
289622	MARLBORO 72'S MENTHOL BOX	1	6.14	0.00	6.14	
PROMO	Mix: 2 Qty: 2 Disc \$--0.50	1	-0.50	0.00	0.00	
LOYALTY	Loyalty Discount	1	-1.00	0.00	-1.00	

Up

BEER WINE  
ICE CANDY MISC TAXAB  
Miscellaneous Non Tax Coffee black mild sin  
black\_mild FT 100 singl Gas Gas Refun

# New Customer Loyalty Rewards Program

## INCREASE Foot Traffic with Loyalty Rewards

Allow your customers to earn free or discounted products when they frequently purchase an item. For example, purchase 9 cups of coffee and get the tenth cup free. This uses the same loyalty card as the Scan Data loyalty but is not specific to tobacco.

Item No	Description	Expires	Price	PC	
CoffeeLG	Large Coffee	05/15/2020	FREE	301	Select
					Select
					Select
					Select
					Select

Purchases Exit

## Merchandise Manager Pricing good through 7/1/2020

- Onsite Installation / Setup
- Includes a preset database with most inventory sold in convenient stores. You do not need to enter all of your inventory.
- Initial onsite training session to change your prices and to add any new inventory.
- Follow up training session to begin processing sales and closing for the day.
- Access to How To videos that provide all the directions for the most asked questions.
- Phone/remote support for assistance to your questions.
- Back Office software to allow reporting, Inventory changes, Purchase Orders and updates.
- Interface to the Scan Data processor.  
(Note: The processor will have a monthly fee for their services)
- Interface to the Loyalty Program.  
(Note: The first 2 months are included. There is a slight monthly fee for the service))

### Price based on the number of registers

	Purchase Price	16 month payment plan
<b>1 Register</b>	<b>\$895</b>	<b>\$59.00 / mo.</b> Plus tax
<b>2 Registers</b>	<b>\$1,295</b>	<b>\$84.00 / mo.</b> Plus tax
<b>3 Registers</b>	<b>\$1,685</b>	<b>\$109.00 / mo.</b> Plus tax

Call for more than 3 registers

Save up to **\$650** with automatic credit card interface!!

# Includes all hardware needed to start processing sales



## Hardware pricing good through 7/1/2020

POS-X Touchscreen Terminal

Star Thermal Receipt printer

Barcode scanner with flex stand

Cash drawer

Keyboard / Mouse / cables for printer and cash drawer

5 port router with 6 ft. Ethernet cables

1 USB removable drive for disaster recovery backup

**\$1,489.00**

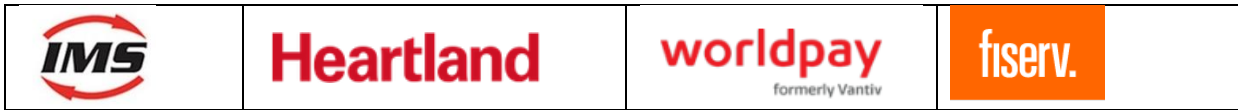
Per unit Plus tax





# Automatic Credit Card Interface

Merchandise Manager interfaces with several credit card processors for real time automatic credit card verification.

## Why select the Automatic Credit Card Interface?

<b>ELIMINATE COSTLY ERRORS</b>	The software will automatically process the credit card without your cashier manually entering the dollar amount in a separate device.
<b>SAVE MONEY</b> Up to <b>\$825</b> savings on your purchase!	Discounts are available on the initial software purchase, the initial credit card devices and yearly maintenance fees. You can save up to <b>\$650</b> on the Merchandise Manager software and up to <b>\$175</b> per credit card device.



Devices accept card swipe/ Chip / Apple Pay / Android Pay			
<b>Credit Card Processing</b>			
 <b>Accept all payment types</b> Make sure your customers can pay any way they want, whether it's with a rewards card, a mobile phone, or an EMV chip card.	 <b>Sell on demand</b> Make it easy for customers to buy wherever they want including in-store, in-app, and online. You'll capture more revenue and loyalty.	 <b>Speed up checkout</b> Bring the terminal to the customer so you can shorten lines, serve more customers and deliver an added touch to the checkout experience.	

**Spartan Software, Inc.**

[www.merchandisemanager.net](http://www.merchandisemanager.net)

Call: **330.719.7157** Email: [spartansoftware@zoominternet.net](mailto:spartansoftware@zoominternet.net)